

# About the Unit



## GolfGPS Accessories

# GolfGPS

GolfLogix GPS Powered by Garmin

## Quick Start Guide

**Up/Down Buttons**  
Scroll to Next Hazard or Hole. Press & Hold to Quickly Scroll

**Enter Button**  
Press to Measure Distance of Last Shot and Use to Select Menu Items



**Page Button**  
Press to select between multiple courses. Press and Hold for 4 Seconds to Check Battery Signal and Adjust Screen Contrast

**Power Button**  
Press and Hold to Power Unit On/Off

### Helpful Hints

#### DISTANCE OF LAST SHOT

Track the distance of your last shot by pressing the **Enter** button. GolfLogix GPS will continue to track your shot distance until you press **Enter** again and return to the yardage screen.



#### ADJUST SCREEN CONTRAST

Press and hold the **Page** button to access the Menu screen. Use the **Down** button to scroll to **Display** on the Menu screen. Press the **Enter** button, press the **Down** button to activate the contrast bar. Press the **Enter** button again and then use the **Up/Down** buttons to adjust the contrast. When contrast is set, press the **Page** button twice to back out of the Menu screens.

For help with GolfLogix hardware, software or course mapping please contact our customer support hotline. Do not return the item to your retailer.

### Suction Cup Mount



Free up your hands to drive the cart and enjoy your time on the course.

This adjustable Cart Mount bends and tilts for optimal viewing. It also has a locking mechanism to keep the unit secure on multiple surfaces.

### Rechargeable Battery Pack

A useful device for home to keep all your battery devices fully powered at all times. The charger included with four rechargeable AA batteries not only provides a low cost solution to battery consumption, but is also very easy to use.



**Customer Service Number**  
1-877-977-0162

Purchase these accessories and more at  
**www.GolfGPS.com**  
1.877.977.0162



The Best GPS for Golf

## Step 1: Install Software

- Open your Internet browser to download the latest GolfLogix software to your computer.
- Go to: [www.golflogix.com](http://www.golflogix.com) and click on the **Download Software** link from the home page.
- Click on **Download Driver** and follow the steps, clicking on run when prompted.
- Click on **Download Software** and follow the steps, clicking on **run** when prompted.

## Step 2: Connect GolfLogix GPS

- Make sure your computer is connected to the Internet.
- Open the GolfLogix Course Manager by clicking on the icon on your desktop.
- Scroll, read and click **Accept** at the bottom of the License and Warranty Agreement to continue.
- Ensure that there are batteries in your GolfLogix GPS unit. (To remove the battery panel, lift the silver D-ring and ¼ turn counter-clockwise)



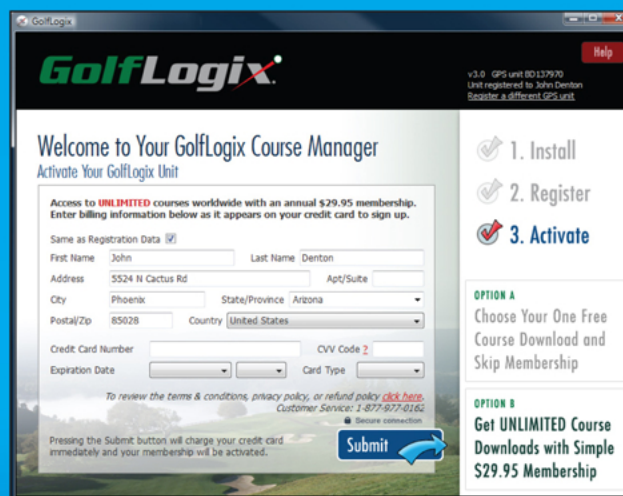
- Press the lower-right **PWR** button on the unit to turn it on
- Insert the tabbed end of the serial cord into the back of your GPS unit by sliding it in place. (The connection is located by lifting the black rubber tab on the top-back of the GPS unit.)
- Insert the other end of the cord into your computer's USB port.



Note: If the cords are tightly connected and the GPS unit is powered on, you should automatically proceed to the form.

## Step 3: Activate Account

- You will be asked to create an account password.
- Complete the Password screen and click **Submit**.
- Complete the Registration form and click **Submit**.
- To activate your account, complete the Membership screen selecting **Option A** or **Option B**.
- Click **Submit** to activate your GolfLogix membership.

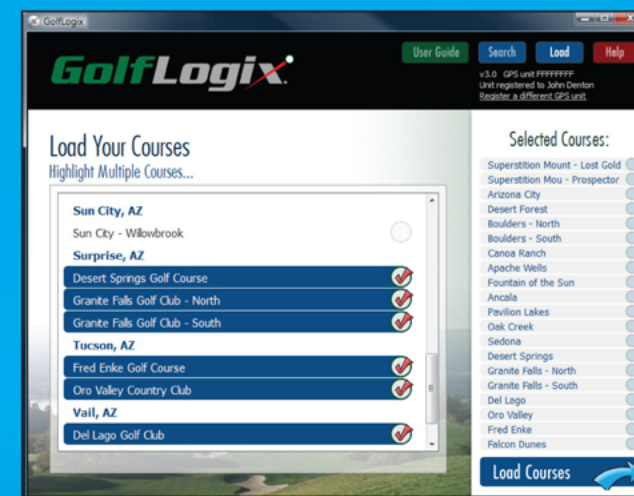


## Step 4: Search & Save Courses

- Ensure that you are connected to the Internet and your GolfLogix Course Management Software is open.
- Click **Search** and enter search terms for a list of courses in a region. You can also enter a specific course name to limit the length of the course list.
- Click on the course name that you want. When the course name is selected, it will be highlighted and have a check mark.
- Click **Save** to save the selected course on your computer.
- Repeat to save additional courses on your computer if you have an annual subscription membership.

## Step 5: Load Courses

- Ensure that your GolfLogix GPS is plugged into your computer and powered on (Step 2).
- Open the GolfLogix Course Manager software on your computer and click **Load**.
- Click on courses you wish to load on your GolfLogix GPS. You will see each selected course show up on the right side of the screen. You can load up to 20 courses on the device.
- Once you are done selecting, click the **Load Courses** button.



## Step 6: Play Golf!

- Press the **PWR** button to turn on your GPS 5-10 minutes before starting your round so that it can locate satellites.
- Note: GolfLogix GPS must have a clear view of the sky at all times to obtain and sustain satellite connections.
- The unit will automatically identify the course you are playing.
  - Use the **Up** button to scroll to the hole you are playing first.
  - During your round, GolfLogix GPS will automatically advance to the next hazard and hole. Use the **Up/Down** buttons to manually scroll, if desired.
  - After you complete your round, remember to turn off the GolfLogix GPS to prolong the battery life.